

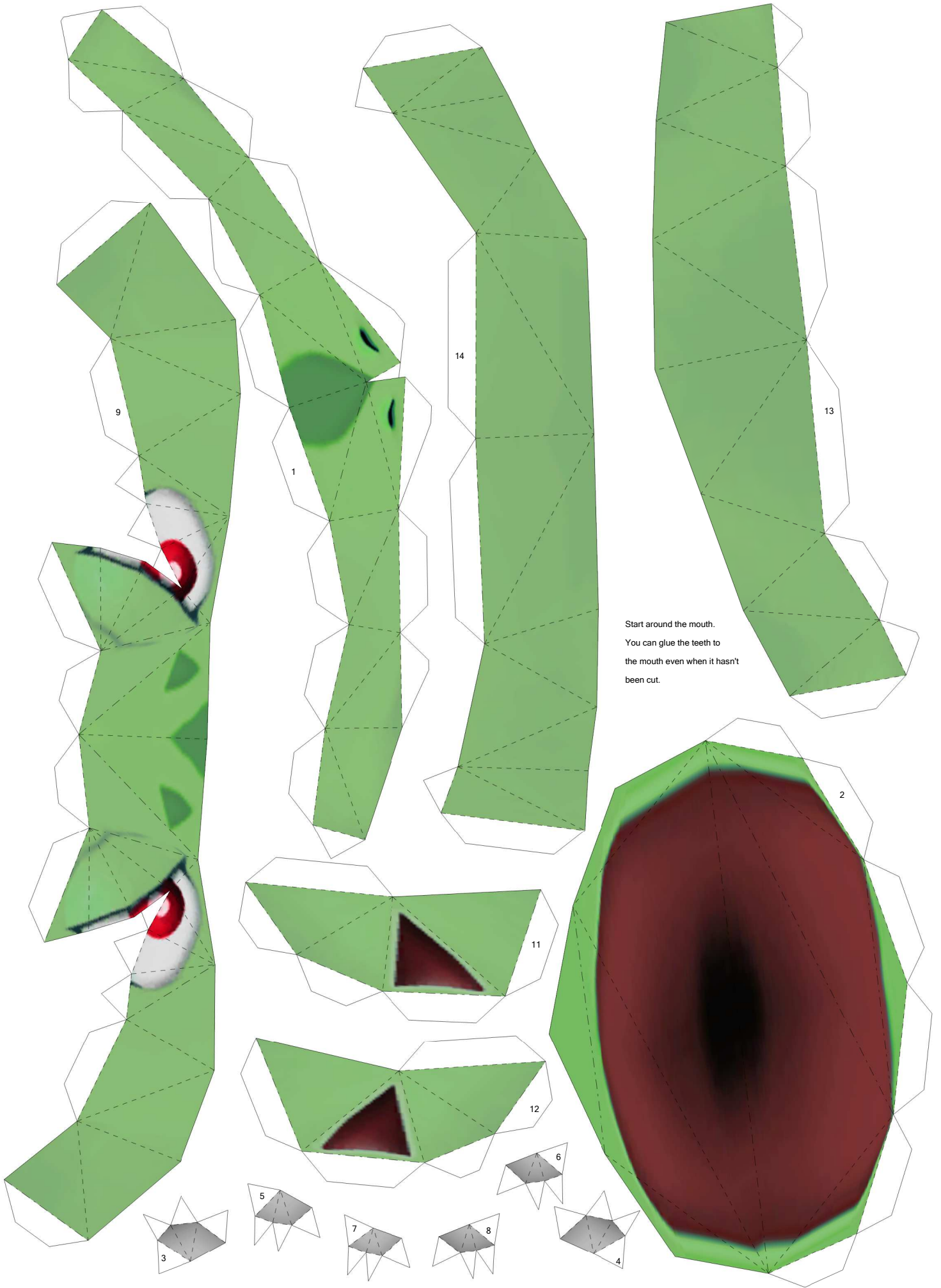


M Venusaur

by Brandon

Build by LuIS

Paper Pokés
www.pokemonpapercraft.net

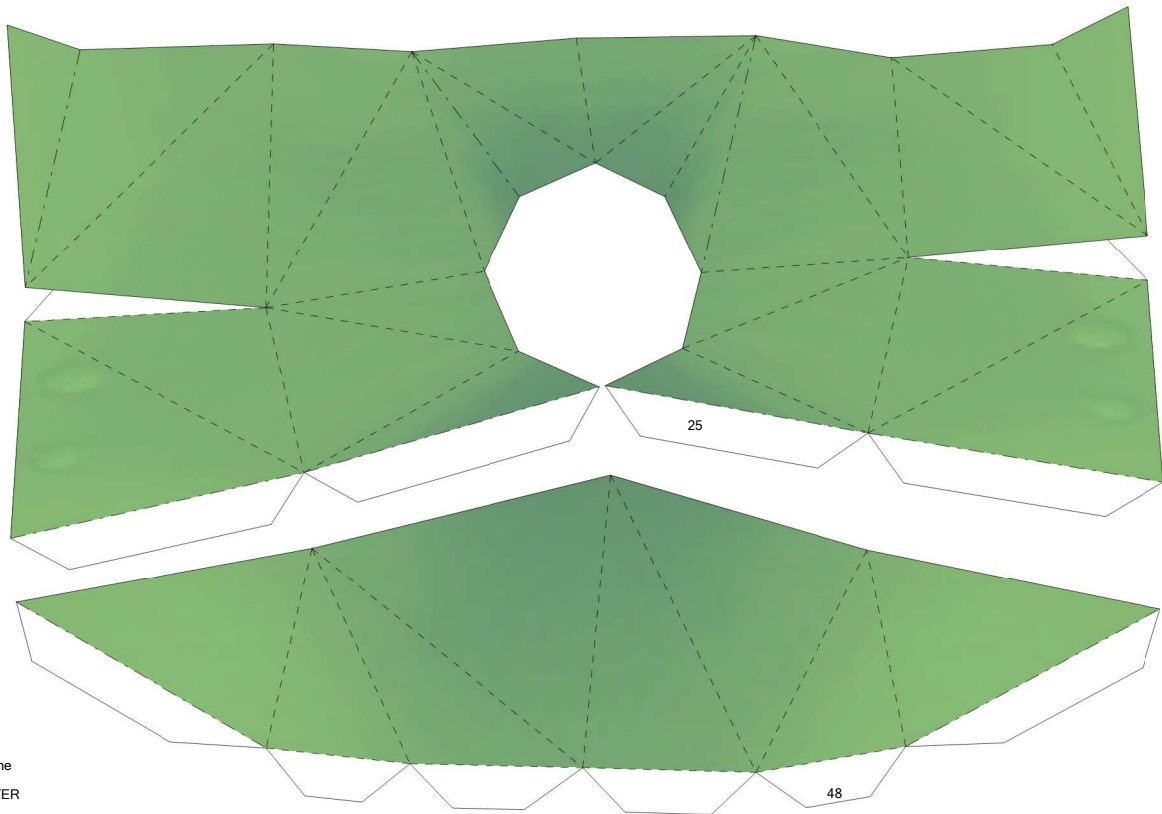


Start around the mouth.
You can glue the teeth to
the mouth even when it hasn't
been cut.



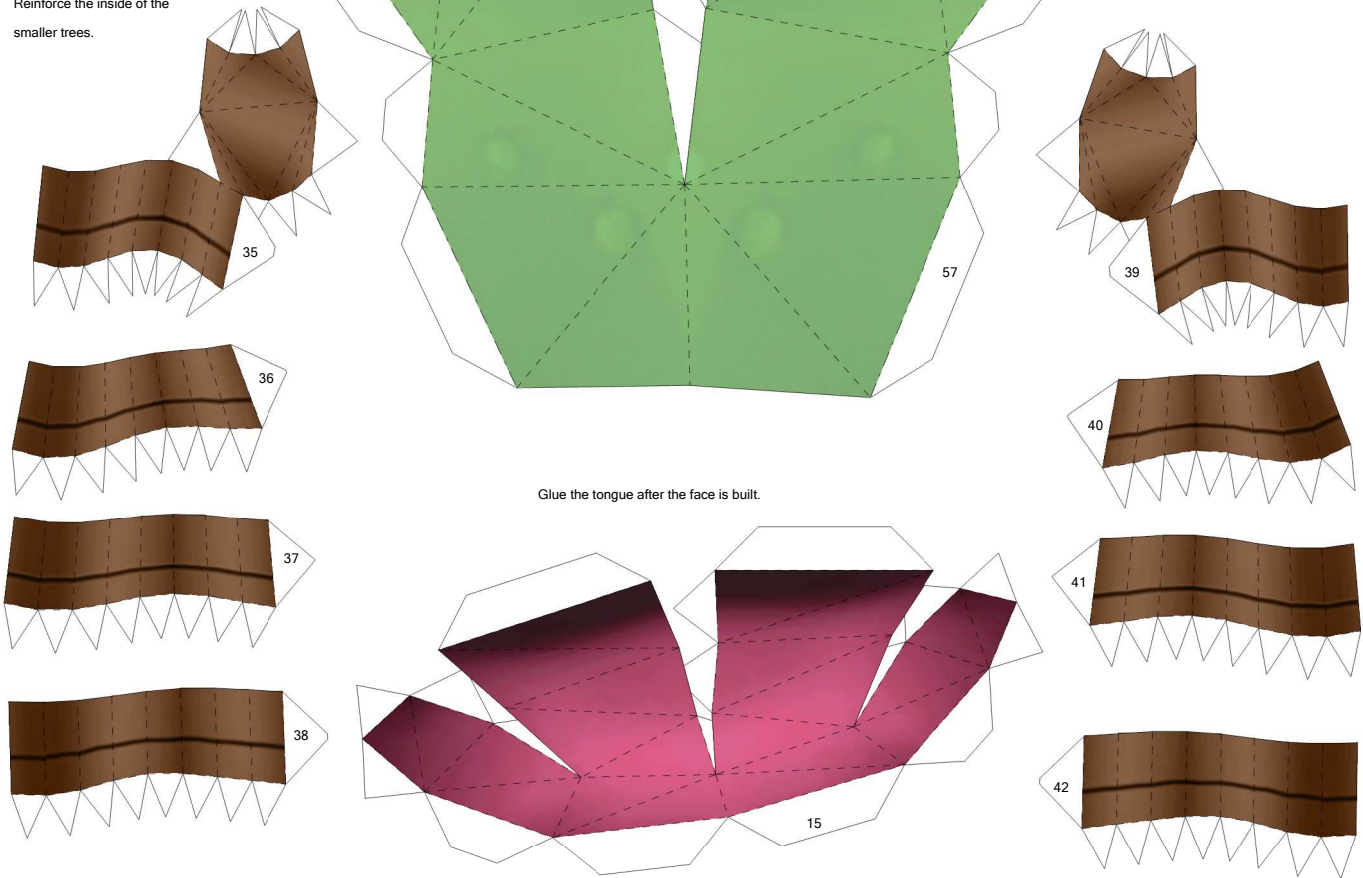


Close at the back legs and glue the nails after.



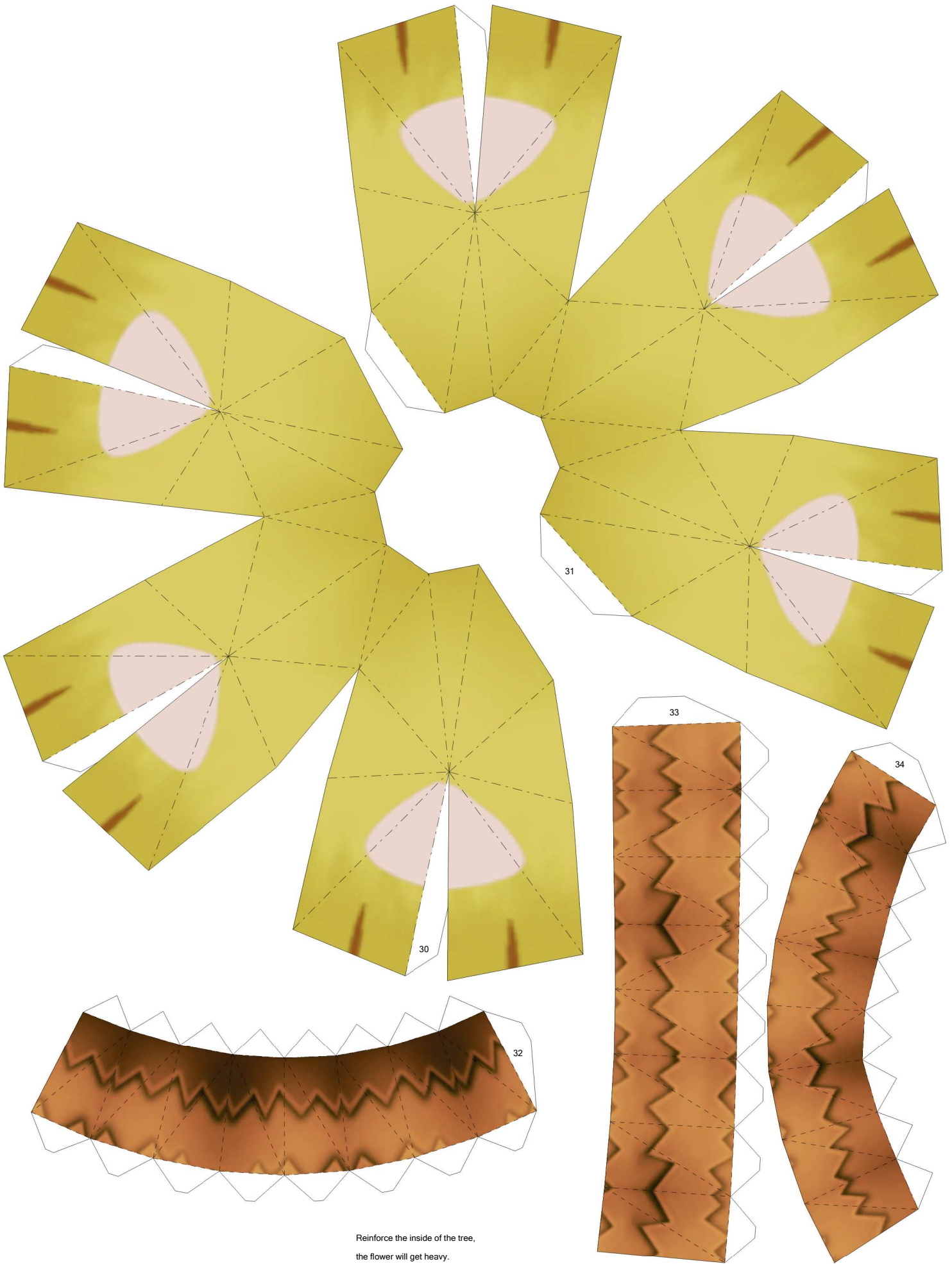
You MUST reinforce the inside of piece 25 AFTER the trees are glued to the top of the model.

Reinforce the inside of the smaller trees.

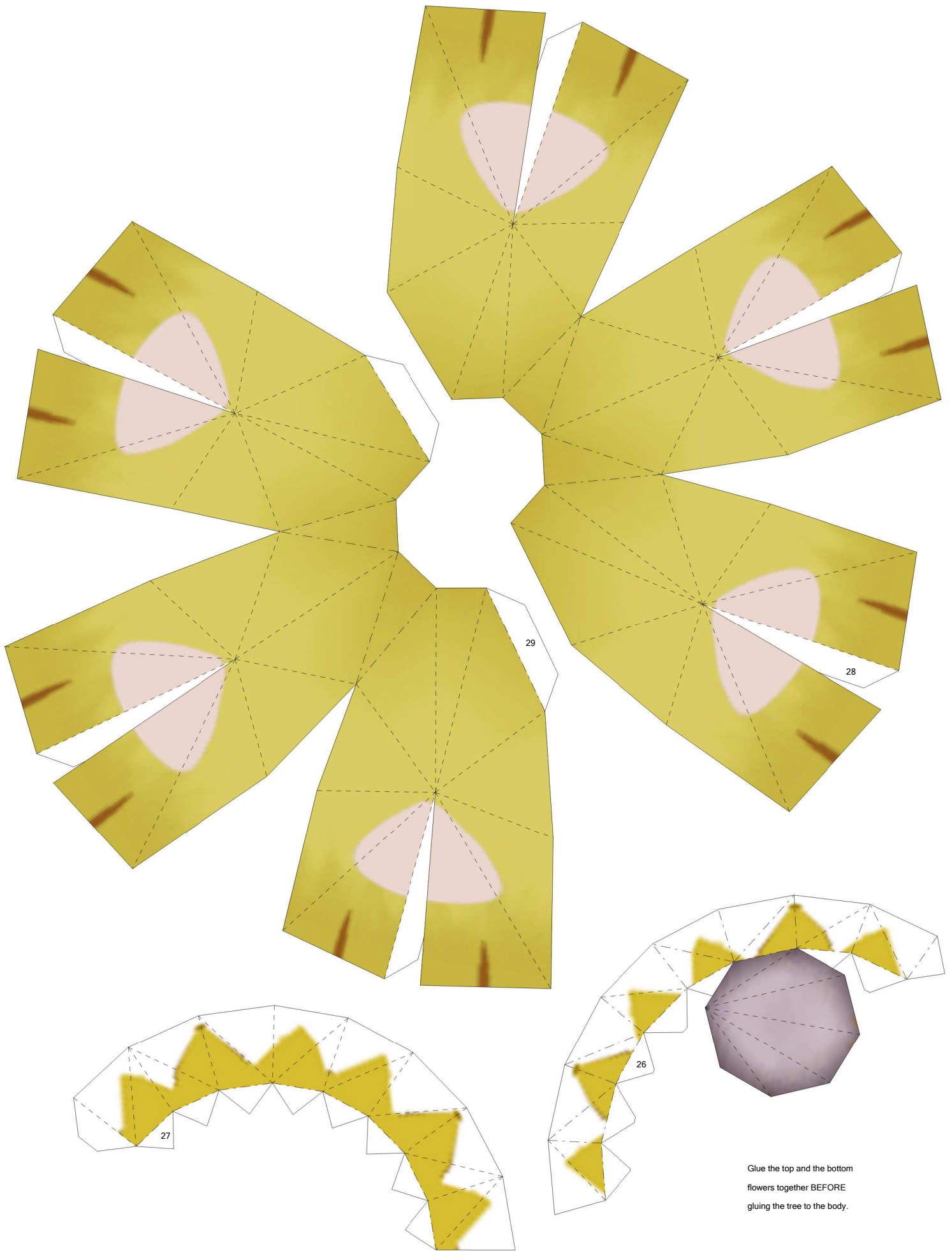


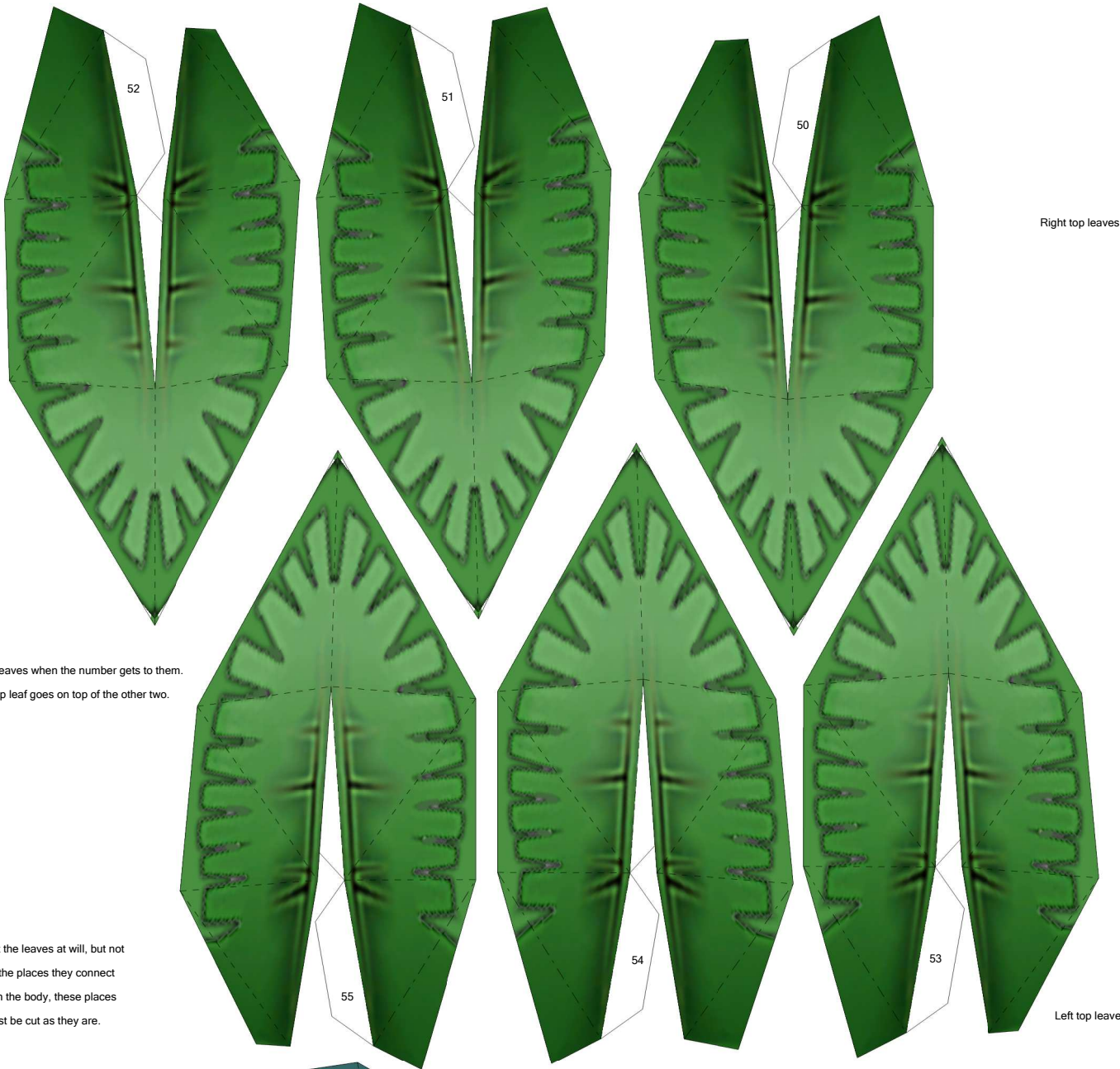
Glue the tongue after the face is built.

Tongue



Reinforce the inside of the tree,
the flower will get heavy.



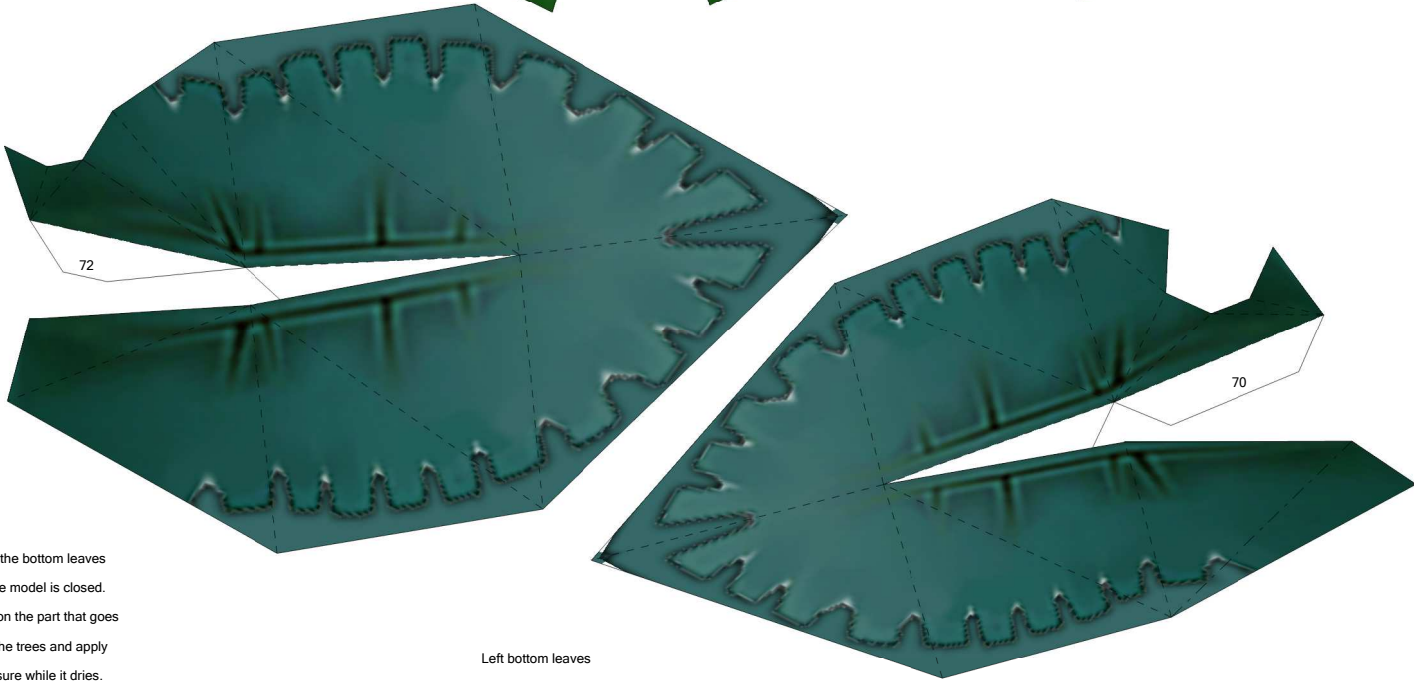


Right top leaves

Glue the top leaves when the number gets to them.
The middle top leaf goes on top of the other two.

Cut the leaves at will, but not on the places they connect with the body, these places must be cut as they are.

Left top leaves

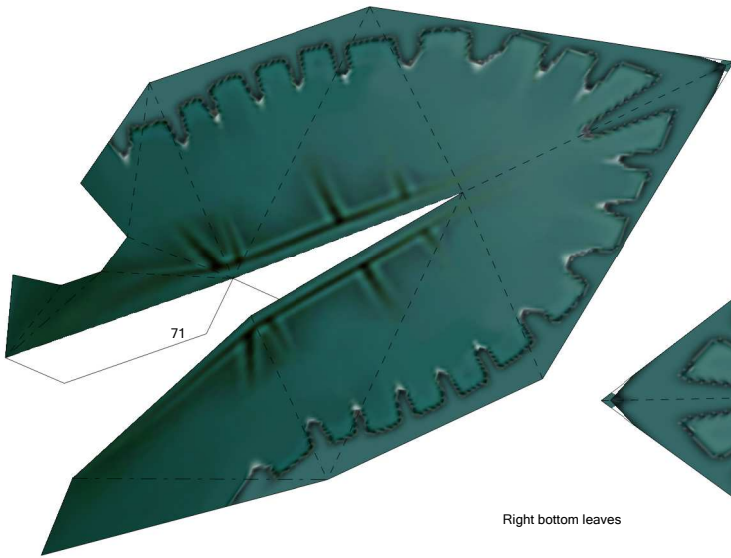


Left bottom leaves

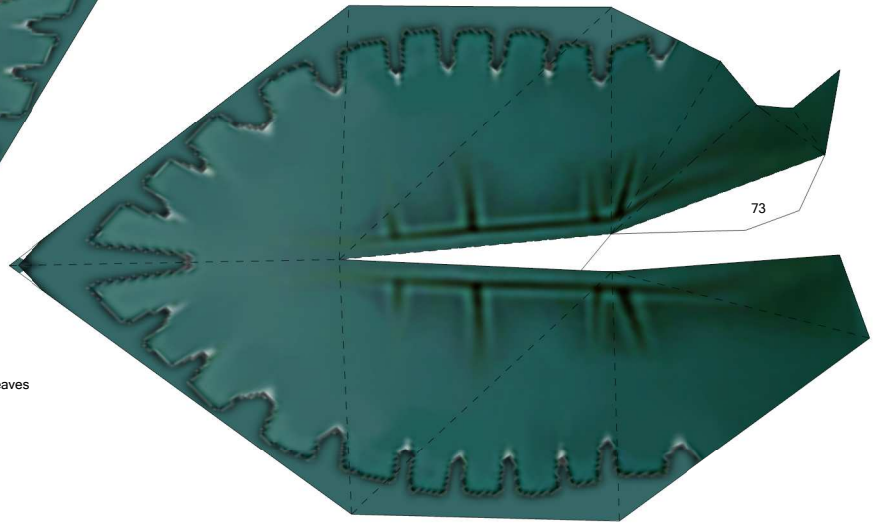
Only glue the bottom leaves AFTER the model is closed.
Use glue on the part that goes closer to the trees and apply some pressure while it dries.



Print on the back of the page with the top leaves

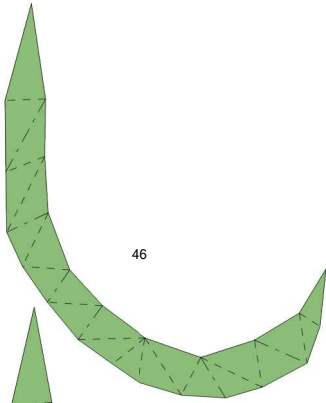


71

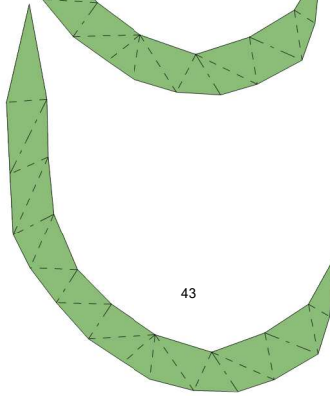


73

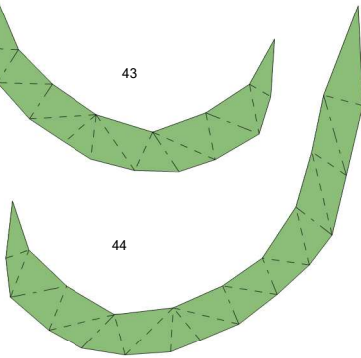
Right bottom leaves



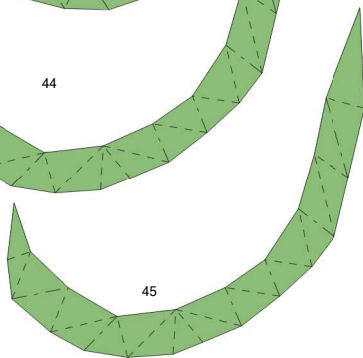
46



43



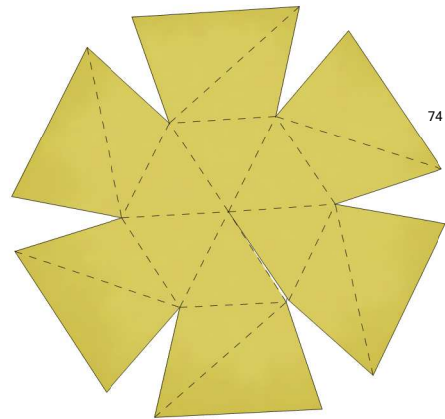
44



45

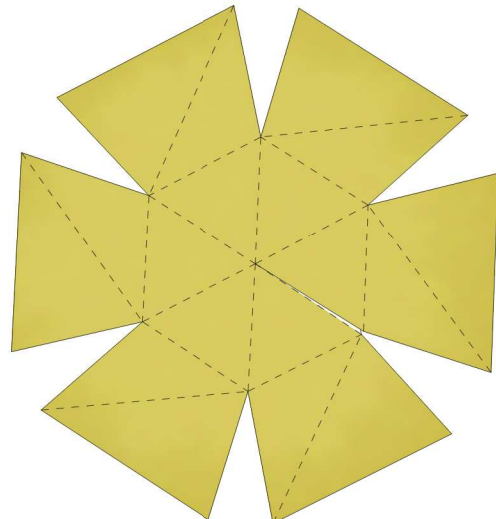
43 is the front right
44 is the front left
45 is the back right
46 is the back left

This order MUST be followed.



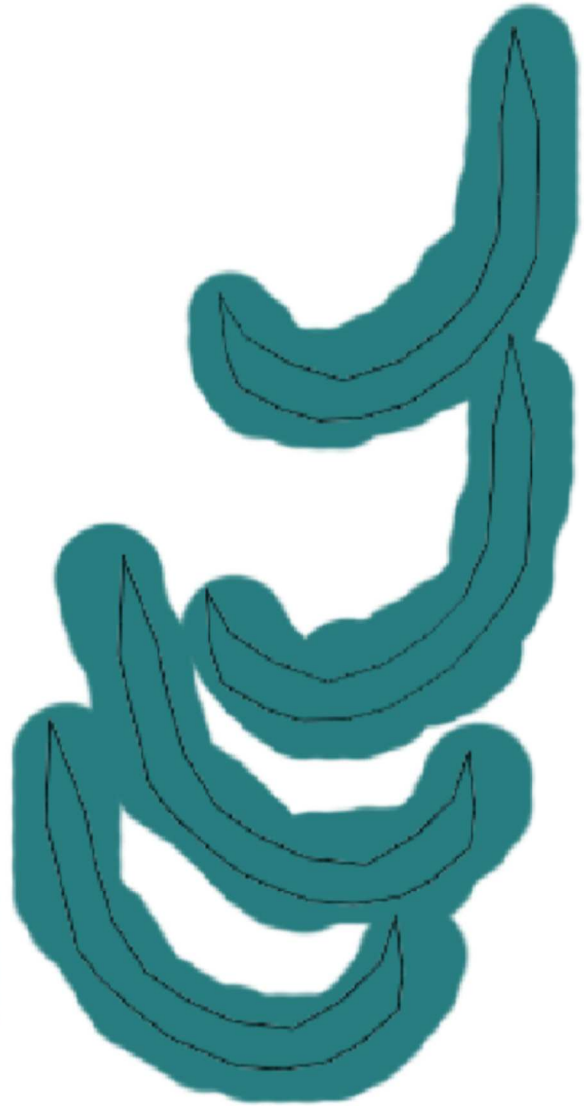
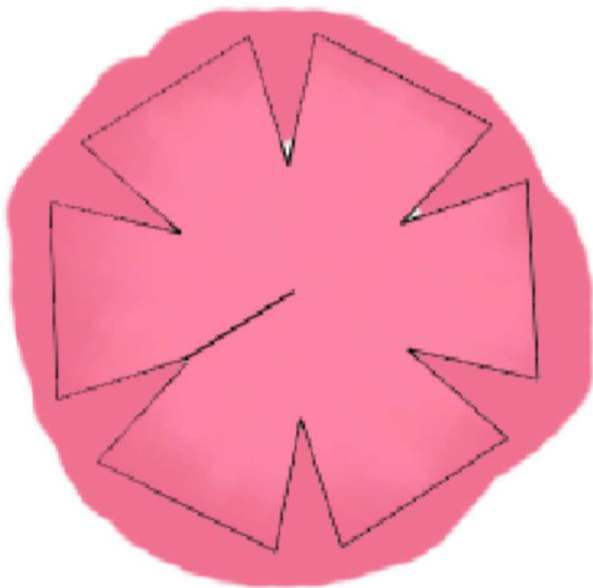
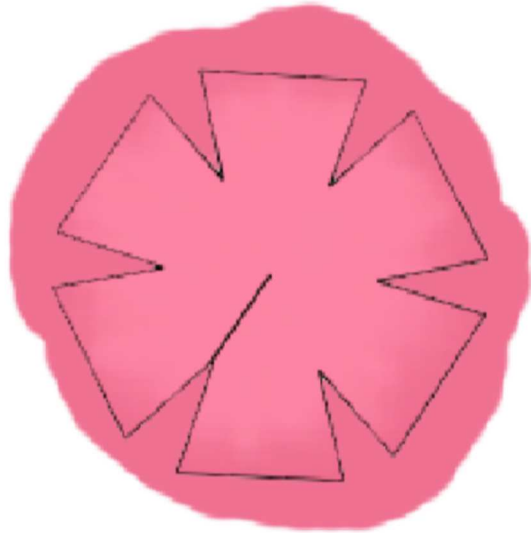
74

Back flower



47

Head flower



Print on the page with the smaller flowers.